

# Using the Farm Bill to Support a Local Project

Heather Dutton, Coordinator  
Rio Grande Headwaters Restoration Project



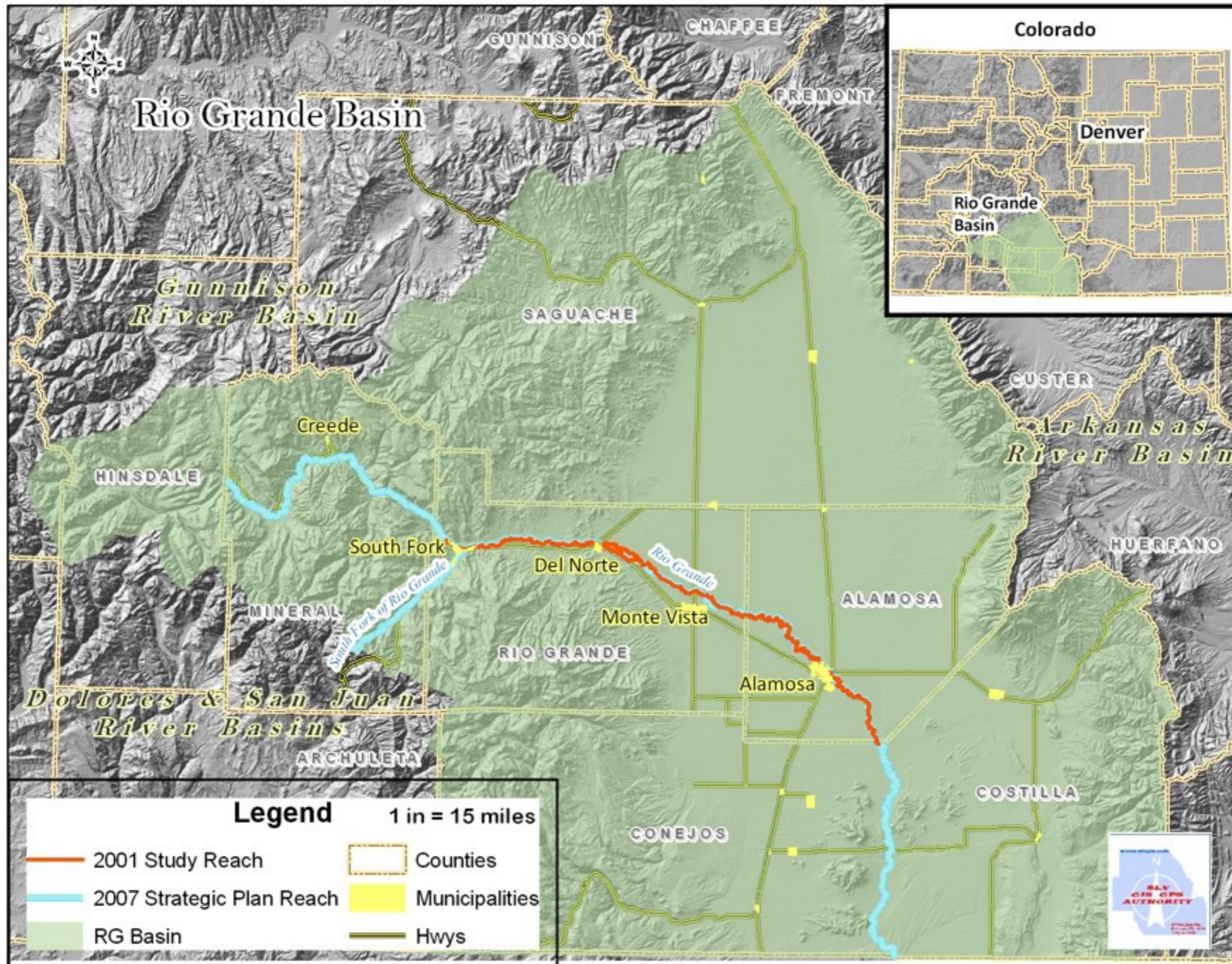


# About Us

- Rio Grande Headwaters Restoration Project (RGHRP)
- Outgrowth of 2001 Study - Promoted by Local Stakeholders
- 91-mile Project Reach
- Fiscal Agent: Colorado Rio Grande Restoration Foundation









# 2001 Study - Restoration Priorities

- Geomorphic and Channel Stability Improvements
- Diversion and Headgate Improvements
- Riparian Buffers
- Grazing and Land Use Management
- Town Flood Protection





# RGHRP Programs

- Streambank Stabilization and Riparian Restoration Program
  - 6 Projects
  - 50 Sites
  - 7.5 Miles





# RGHRP Programs

- Diversion and Headgate Repair and Replacement Program
  - 6 Projects
  - 15 Ditch Companies





# RGHRP Programs

- Outreach and Education Program
  - Tours
  - Radio and Newspaper
  - Festivals
  - Volunteer Events
  - Meeting Updates





# Using the Farm Bill for Projects

- RGHRP Projects Utilize Following Programs
  - EQIP
    - CPP
    - CCPI
  - WHIP
  - CTA





# Rio Grande Riparian Stabilization Project - Phase 2

- EQIP and WHIP
- 18 sites
- Completed 2004
- Match:
  - CDOW (CPW)  
HPP
  - CONPS 319
  - Landowners





# 2009 CCPI Project

- Cooperative Conservation Partnership Initiative (CCPI)
  - \$340,000
- 12 sites
- Match:
  - CWCB WSRA
  - Landowners





# 2010 CPP Project

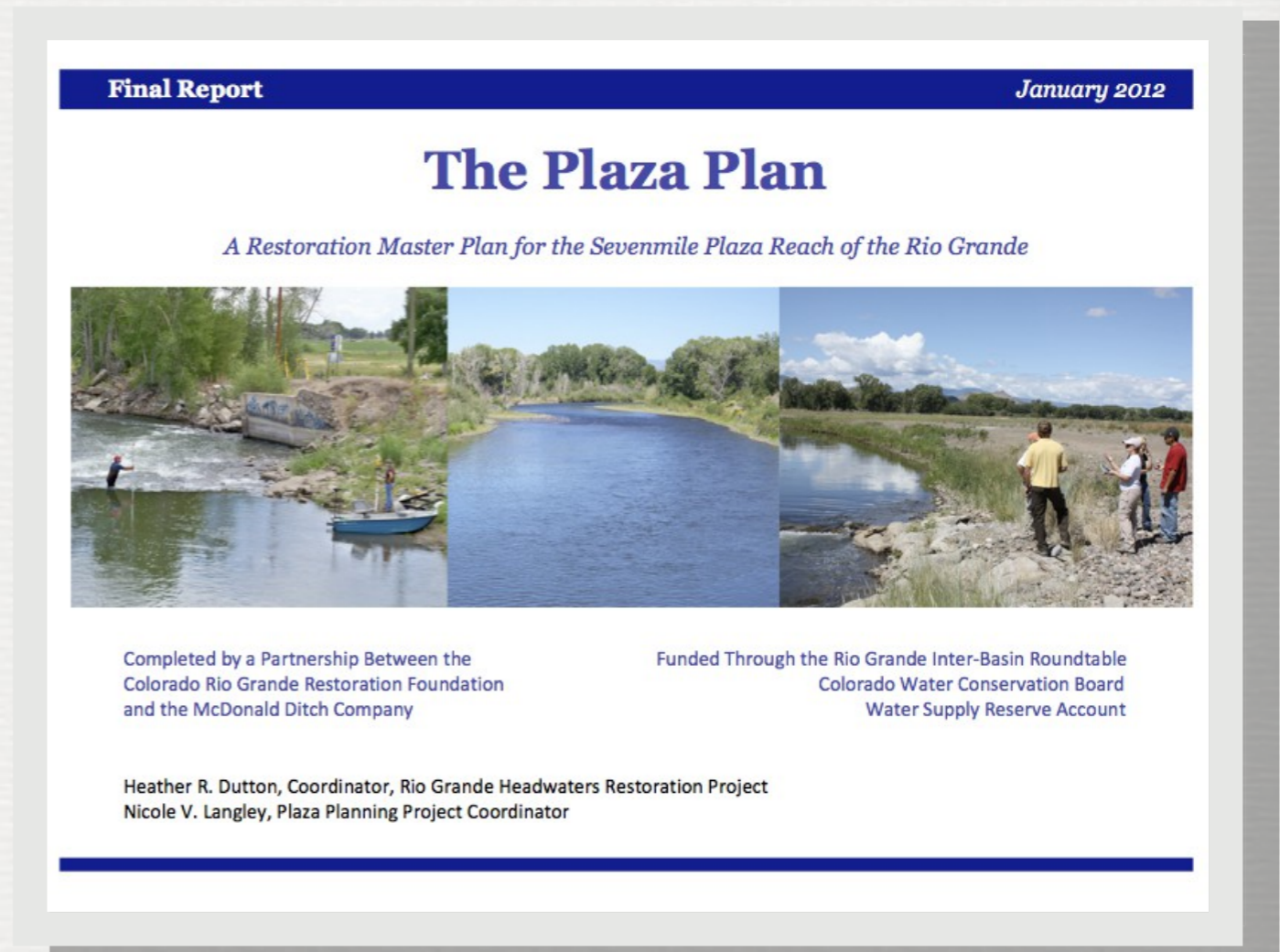
- Colorado Partnership Program (CPP)
  - \$250,000
- 5 sites
- Match:
  - CWCB WSRA
  - Landowners





# CTA - Plaza Project Phase 1

- Conservation Technical Assistance (CTA)
  - ~ \$20,000
- Feasibility Study
  - Identified Issues and Mitigation Methods







Plaza Project Phase 2 - EQIP, CPP, and CCPI



Install bank stabilization methods on both sides of river as needed

Remove excess fill, shape and plant willow clumps.

Regrade selected portions of the wetland area and plant with recommended wetland species including willows, carex and rushes.

Flow before construction.

Flow after construction.

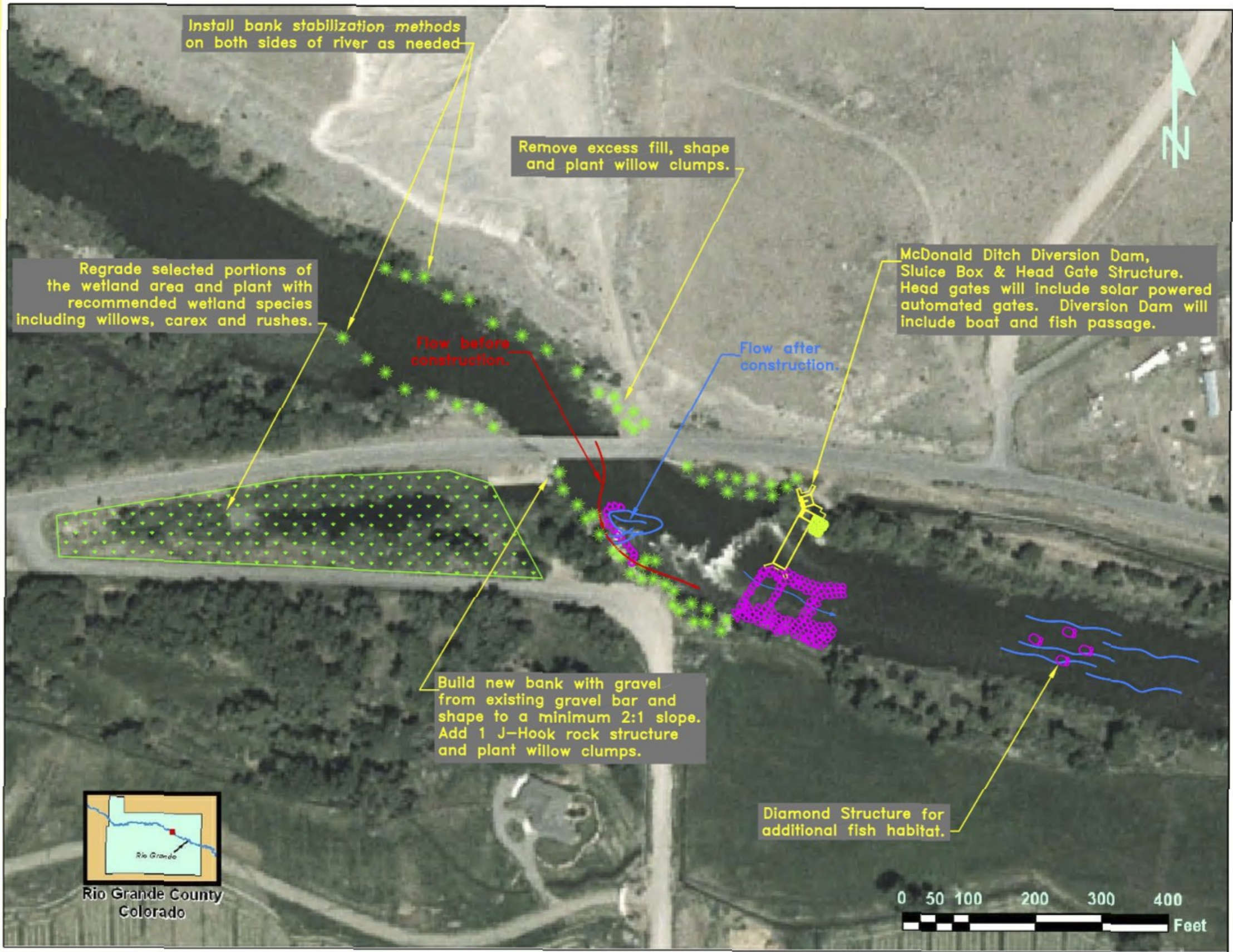
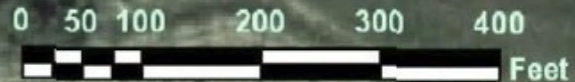
McDonald Ditch Diversion Dam, Sluice Box & Head Gate Structure. Head gates will include solar powered automated gates. Diversion Dam will include boat and fish passage.

Build new bank with gravel from existing gravel bar and shape to a minimum 2:1 slope. Add 1 J-Hook rock structure and plant willow clumps.

Diamond Structure for additional fish habitat.



Rio Grande County Colorado





# Plaza Project - Phase 2 Budget

| Budget for the Plaza Project - Phase II: McDonald Ditch Implementation Project |                   |                  |                   |                      |                  |                      |                  |                      |                  |                 |                   |
|--|-------------------|------------------|-------------------|----------------------|------------------|----------------------|------------------|----------------------|------------------|-----------------|-------------------|
| Project Tasks  | Sources of Funds  |                  |                   |                      |                  |                      |                  |                      |                  |                 | Total             |
|  | EQIP<br>(NRCS)    | CPP<br>(RGHRP)   | CCPI (RGHRP)      | WSRA<br>(CWCB/RGHRP) | Landowners       | Rio Grande<br>County | In-Kind          |                      |                  |                 |                   |
|  |                   |                  |                   |                      |                  |                      | NRCS             | Rio Grande<br>County | SLVREC           | RGHRP           |                   |
| Task 1: Finalize Design  | -                 | -                | -                 | 8,000                | -                | -                    | 93,500           | -                    | -                | -               | 101,500           |
| Task 2: Diversion Replacement *  | -                 | 50,000           | 200,000           | 117,500              | 40,000           | -                    | -                | -                    | 20,000           | -               | 427,500           |
| Task 3: Headgate Replacement *   | 150,000           | -                | -                 | 42,500               | 30,000           | -                    | -                | -                    | -                | -               | 222,500           |
| Task 4: Channel Shaping and Streambank Stabilization*                          | -                 | -                | -                 | 25,000               | -                | -                    | -                | 15,000               | -                | -               | 40,000            |
| Task 5: Wetland Reclamation *  | -                 | -                | -                 | 55,000               | -                | 10,000               | -                | -                    | -                | -               | 65,000            |
| Task 6: Monitoring   | -                 | -                | -                 | 3,500                | -                | -                    | -                | -                    | -                | 200             | 3,700             |
| Task 7: Outreach and Education   | -                 | -                | -                 | 3,500                | -                | -                    | -                | -                    | -                | -               | 3,500             |
| Task 8: Administration   | -                 | -                | -                 | 40,000               | -                | -                    | -                | -                    | -                | 4,300           | 44,300            |
| <b>TOTAL</b>   | <b>\$ 150,000</b> | <b>\$ 50,000</b> | <b>\$ 200,000</b> | <b>\$ 295,000</b>    | <b>\$ 70,000</b> | <b>\$ 10,000</b>     | <b>\$ 93,500</b> | <b>\$ 15,000</b>     | <b>\$ 20,000</b> | <b>\$ 4,500</b> | <b>\$ 908,000</b> |
| <i>Percent of Project Cost</i>   | 17%               | 6%               | 22%               | 32%                  | 8%               | 1%                   | 10%              | 2%                   | 2%               | 1%              | 100%              |

\* Denotes costs based on "Means Heavy Construction Cost Data" utilized by NRCS.



# More Projects....

- Plaza Project Phase 3 - CCPI Funding: \$340,000
- Rio Grande Diversion and Headgate Project
- More Projects to come...





# Project Development

1. Identify Priorities for Restoration
2. Reach Out to the Good People at NRCS
  - Align Conservation/Restoration Priorities
  - Explore Funding Options
3. Reach Out to Landowners and Other Partners
  - Develop Partnerships and Establish Cost-sharing Plan





Heather Dutton, Coordinator  
Rio Grande Headwaters Restoration Project  
HeatherRDutton@gmail.com  
(719) 589-2230 ex 12